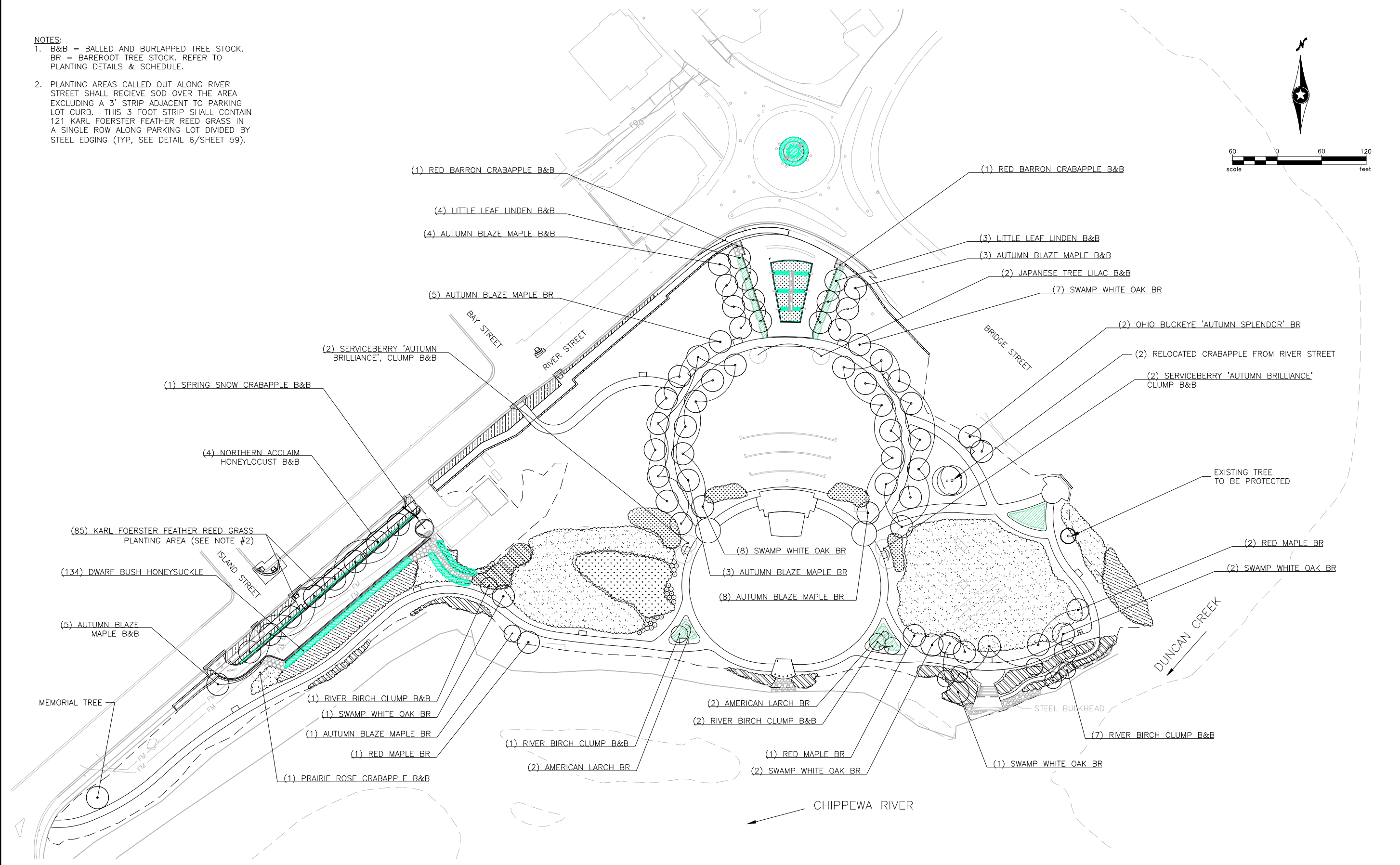
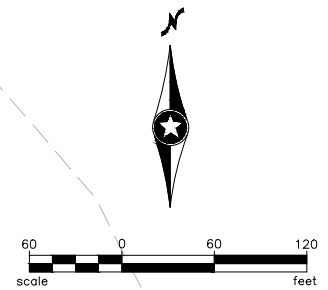


- NOTES:**
1. B&B = BALLED AND BURLAPPED TREE STOCK.
BR = BAREROOT TREE STOCK. REFER TO PLANTING DETAILS & SCHEDULE.
 2. PLANTING AREAS CALLED OUT ALONG RIVER STREET SHALL RECEIVE SOD OVER THE AREA EXCLUDING A 3' STRIP ADJACENT TO PARKING LOT CURB. THIS 3 FOOT STRIP SHALL CONTAIN 121 KARL FOERSTER FEATHER REED GRASS IN A SINGLE ROW ALONG PARKING LOT DIVIDED BY STEEL EDGING (TYP, SEE DETAIL 6/SHEET 59).



\\SEHCF1\Projects\AE\C\City\136936\7-const-svcs\76-record-dwg\Tree As-Built.dwg 12/15/2016 2:30 PM apopp

DRAWN BY:	KL/AM				
DESIGNER:	KL/BK				
CHECKED BY:	GI				
DESIGN TEAM	NO.	BY	DATE	REVISIONS	


 PHONE: 751.720.6200
 10 NORTH BRIDGE STREET
 CHIPPEWA FALLS, WI 54729-2550
 www.sehinc.com

**PHASE 1 DOWNTOWN
 RIVERFRONT GATEWAY PARK
 CHIPPEWA FALLS, WI**

PARK TREES

FILE NO.	131073	1
DATE	12-15-2016	
		1