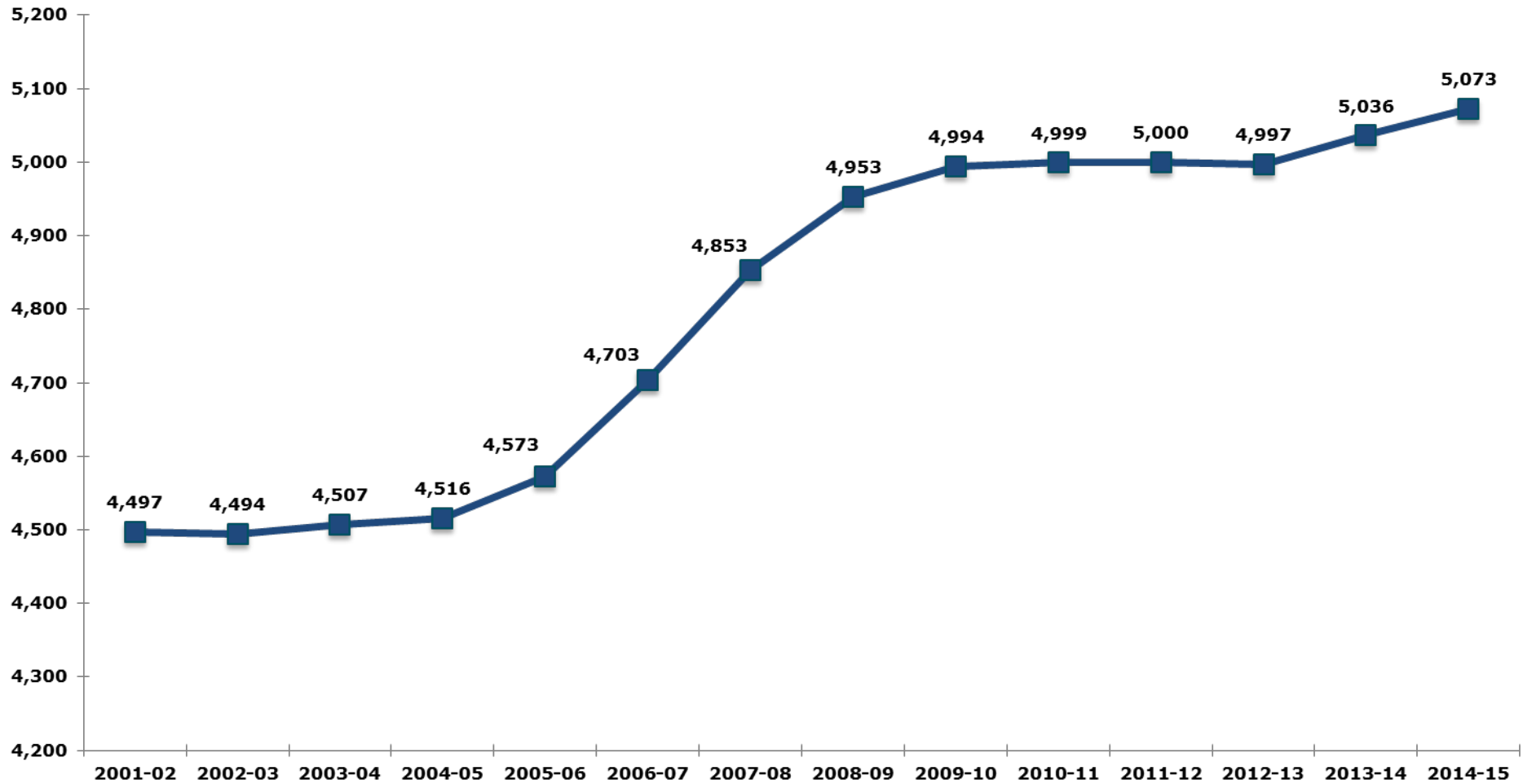


Chippewa Falls Area Unified School District

Financial Overview
November 2015



Revenue Limit Membership - Three Year Rolling Average 3rd Friday (September) + 40% Summer School

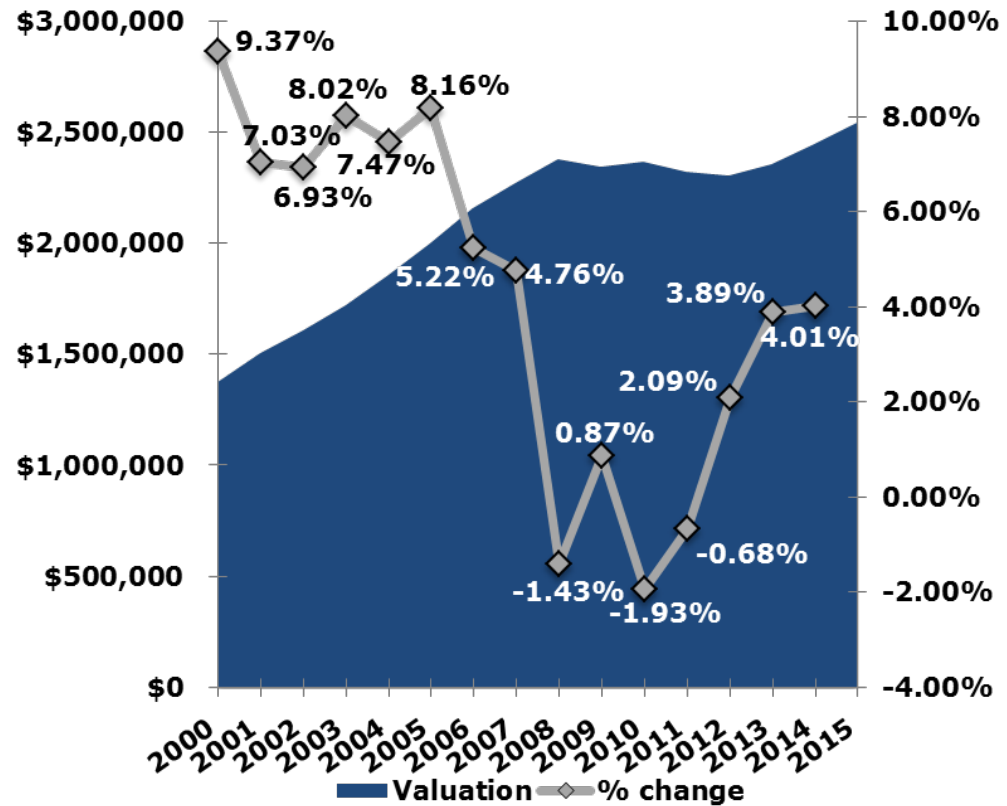


Source: DPI Website

Equalized Valuation Trend (TID-OUT)



<u>Year</u>	<u>Valuation</u>	<u>% change</u>
2000	\$1,374,053,591	
2001	\$1,502,764,845	9.37%
2002	\$1,608,481,310	7.03%
2003	\$1,719,892,015	6.93%
2004	\$1,857,758,461	8.02%
2005	\$1,996,568,062	7.47%
2006	\$2,159,562,458	8.16%
2007	\$2,272,317,655	5.22%
2008	\$2,380,421,404	4.76%
2009	\$2,346,475,626	-1.43%
2010	\$2,366,926,705	0.87%
2011	\$2,321,172,378	-1.93%
2012	\$2,305,339,754	-0.68%
2013	\$2,353,610,431	2.09%
2014	\$2,445,097,529	3.89%
2015	\$2,543,209,998	4.01%



Fifteen Year Average Annual Growth Rate..... 4.19%

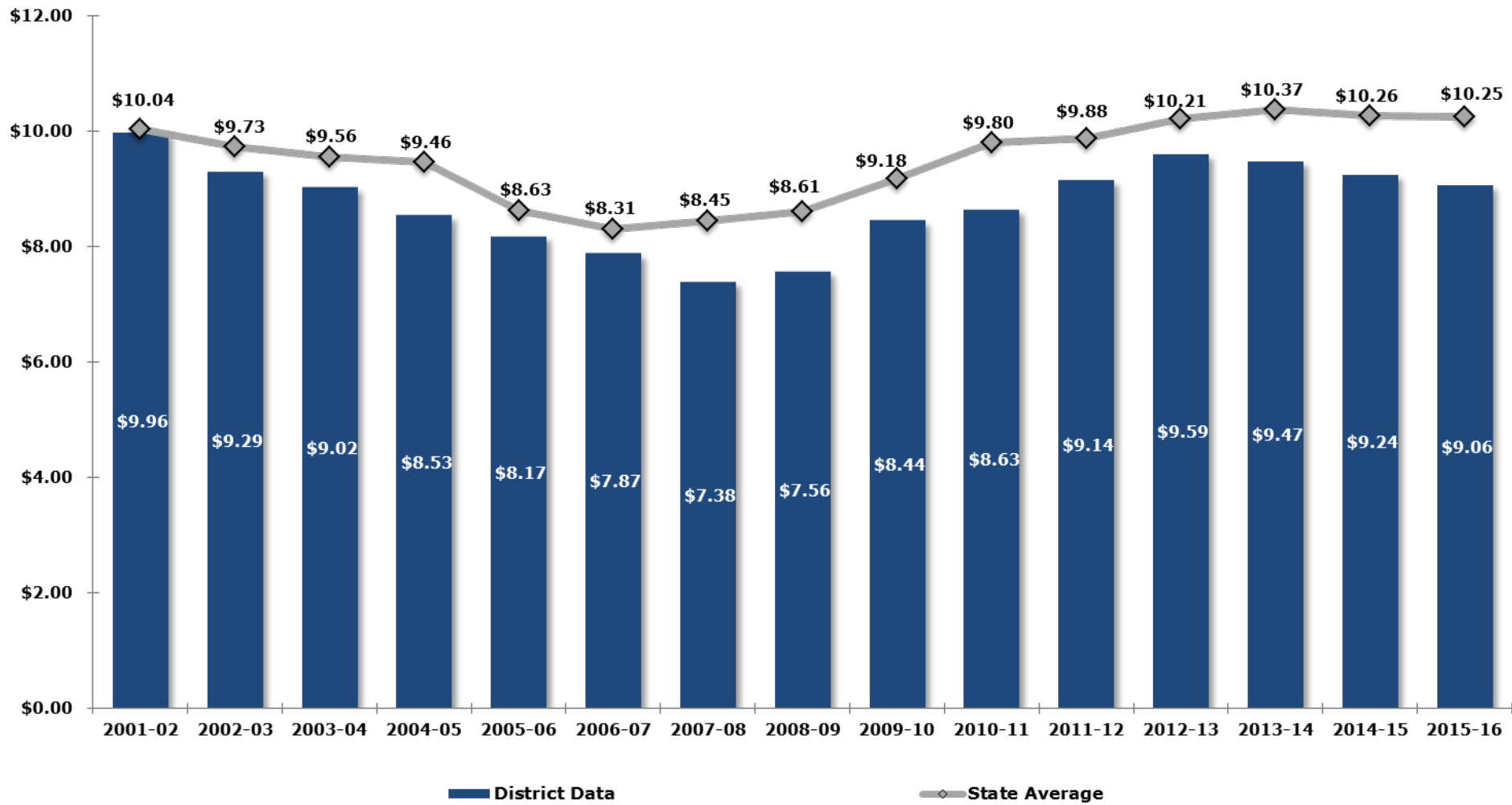
Aid Formula Components

	Actual '13-'14	Actual '14-'15	October Certification '15-'16
DISTRICT Valuation (Tid-Out)	\$ 2,315,767,853	\$ 2,376,325,776	\$ 2,465,221,987
DISTRICT Members	5,055	5,131	5,117
DISTRICT Valuation per Member	\$ 458,114	\$ 463,131	\$ 481,771
STATE Primary Aid Valuation Guarantee	\$ 1,930,000	\$ 1,930,000	\$ 1,930,000
STATE Secondary Aid Valuation Guarantee	\$ 1,091,500	\$ 1,096,664	\$ 1,101,448
STATE Tertiary Aid Valuation Guarantee	\$ 536,523	\$ 531,951	\$ 546,173
Primary Aid %	76.26%	76.00%	75.04%
Secondary Aid %	58.03%	57.77%	56.26%
Tertiary Aid %	14.61%	12.94%	11.79%

Aid Computations

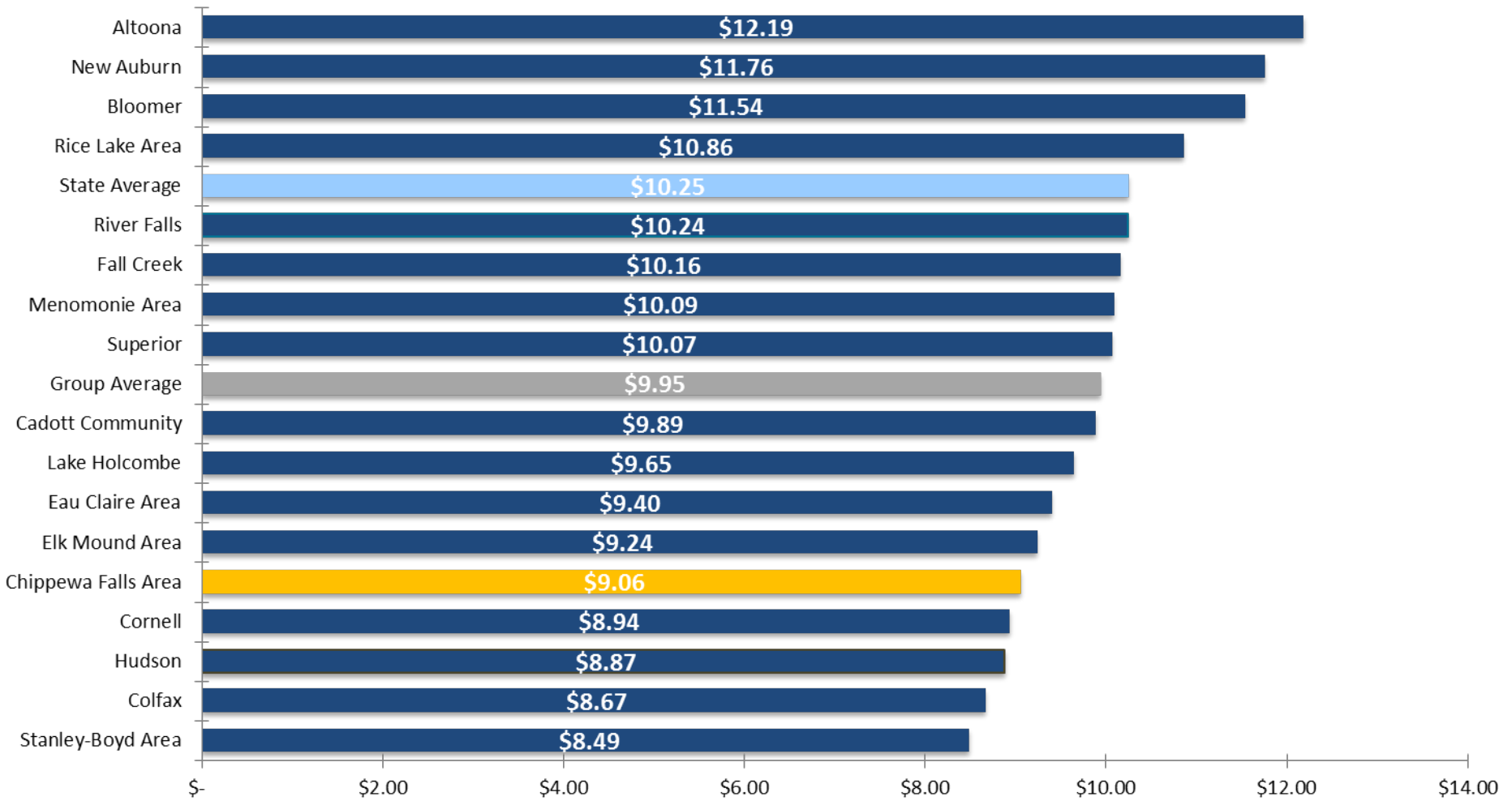
STATE Aidable Primary Cost Ceiling	\$ 1,000	\$ 1,000	\$ 1,000
STATE Aidable Secondary Cost Ceiling	\$ 9,087	\$ 9,227	\$ 9,400
DISTRICT Shared Costs per Member	\$ 9,664	\$ 9,757	\$ 10,273
Additional Costs Below Maximum Ceiling per Member	\$ -	\$ -	\$ -
Total Additional Costs Below Maximum Ceiling	\$ -	\$ -	\$ -
PRIMARY Aid Per Member	\$ 763	\$ 760	\$ 750
SECONDARY Aid Per Member	\$ 4,693	\$ 4,753	\$ 4,726
TERTIARY Aid Per Member	\$ 84	\$ 69	\$ 103
TOTAL Aid Per Member	\$ 5,540	\$ 5,581	\$ 5,579
TOTAL AID	\$ 28,003,781	\$ 28,637,756	\$ 28,548,635
TOTAL Aid As a % of Shared Costs	57.32%	57.20%	54.31%
Aid Adjustment	\$ (615)	\$ 2,333	\$ 5,983
Milwaukee Charter Program	\$ (410,268)	\$ (439,139)	\$ (458,615)
NET AID	\$ 27,592,898	\$ 28,200,950	\$ 28,096,003

Historical Mill Rate Analysis



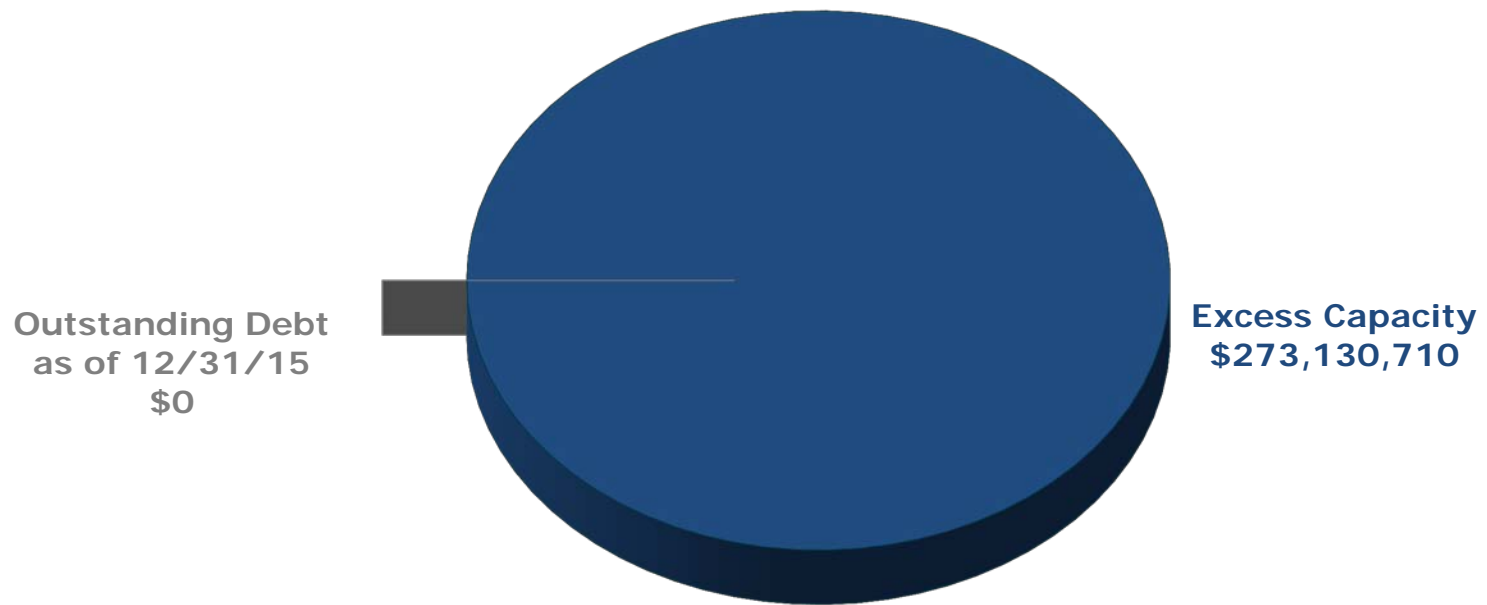
Source: DPI Website

Mill Rate Comparison 2015-2016

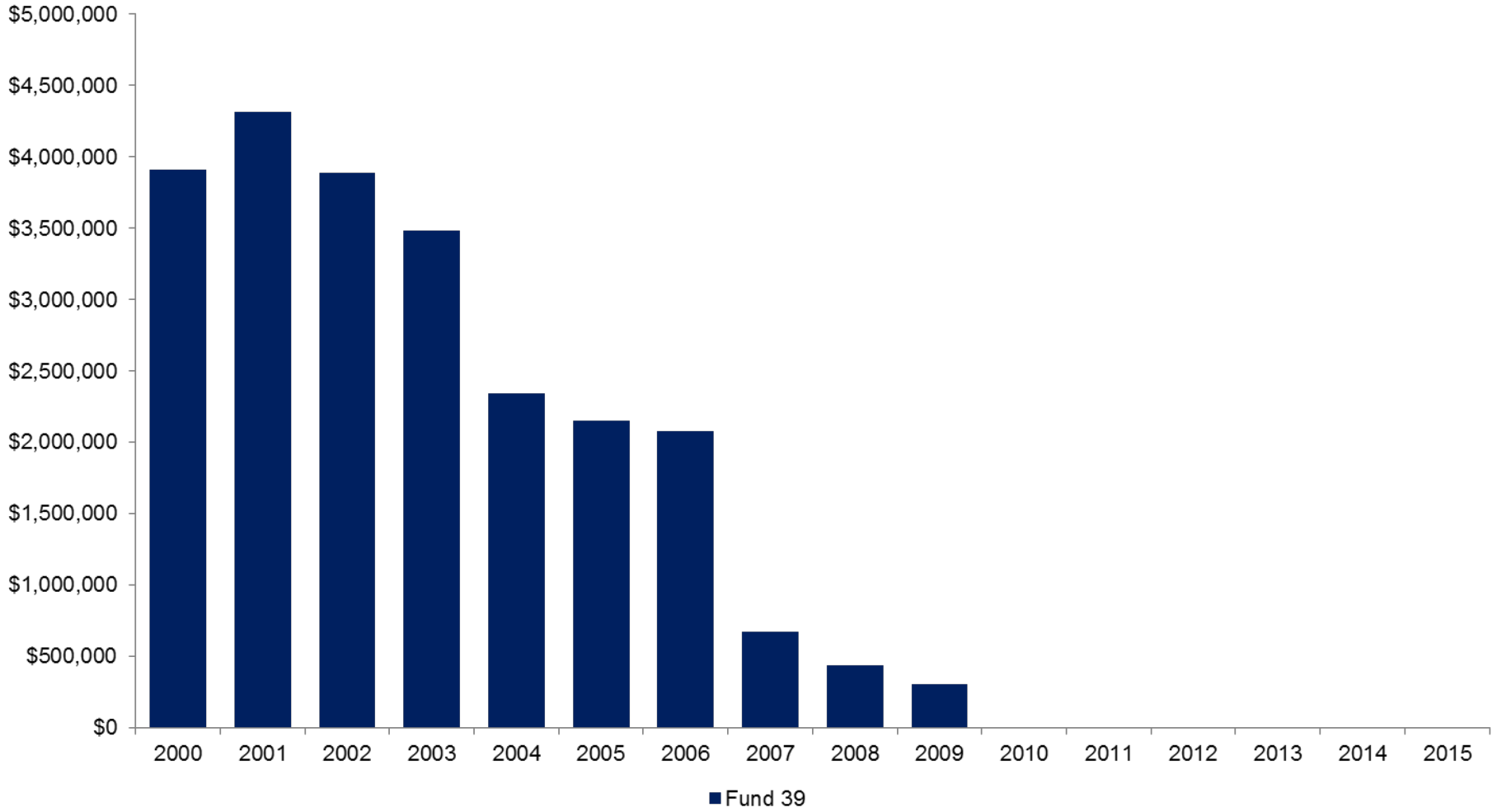


Source: DPI Website

Total Capacity based on 10% of the District's 2015 Equalized Valuation (TID-IN) of \$2,731,307,098 or \$273,130,710.

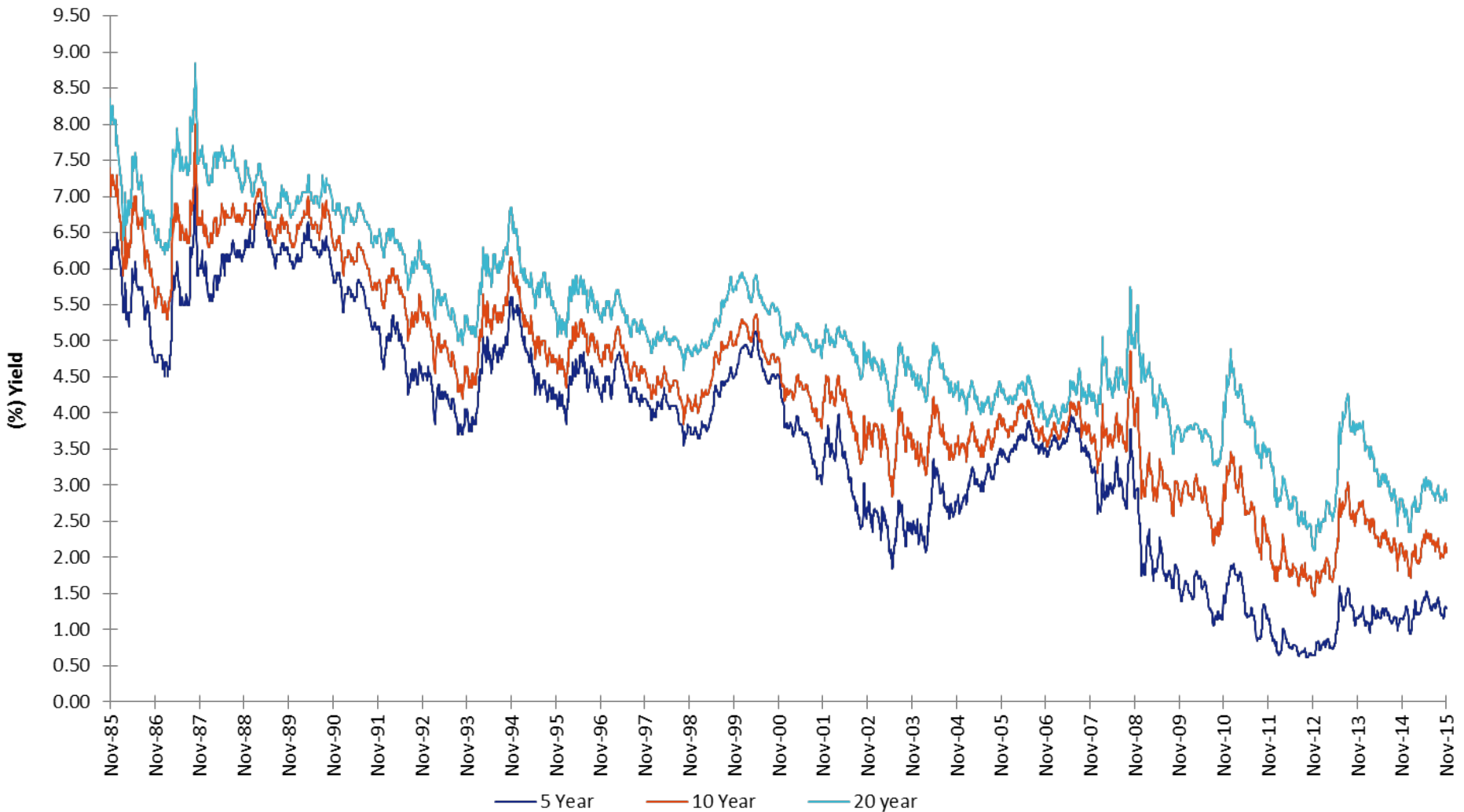


Historical Referendum Debt Levy



Historical Interest Rate Trend

AAA Municipal Market Data (MMD) Index Past 30 Years



SOURCE: Thomson Municipal Market Data of as of November 19, 2015