



Year School Built
1964

Number of Sections
1

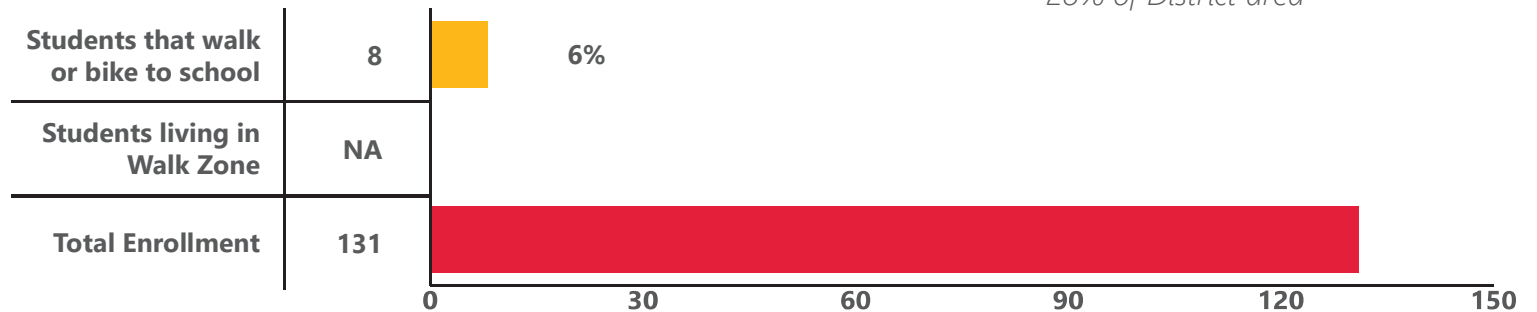
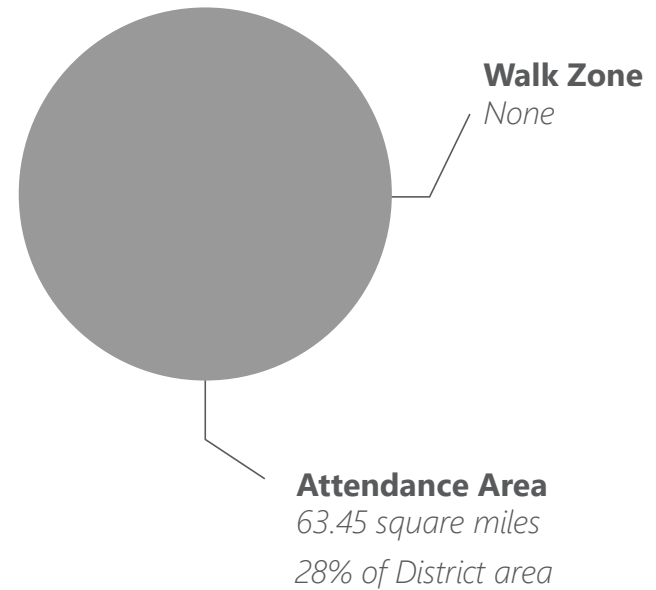
Number of Students
131

Economically Disadvantaged
25%

JIM FALLS ELEMENTARY SCHOOL

The graphic to the right shows the proportion of the walk zone in relation to the size of the attendance area for the school. Jim Falls has the second largest elementary school attendance area and does not have a designated walk zone.



The graph below shows the number of students that walk or bike to school, the number of students who live in the walk zone, and total enrollment for the school. Estimates of the number of students that walk or bike to school were taken from classroom tally sheets that were administered to students. Even though there is no designated walk zone, some students still walk and/or bike to school.





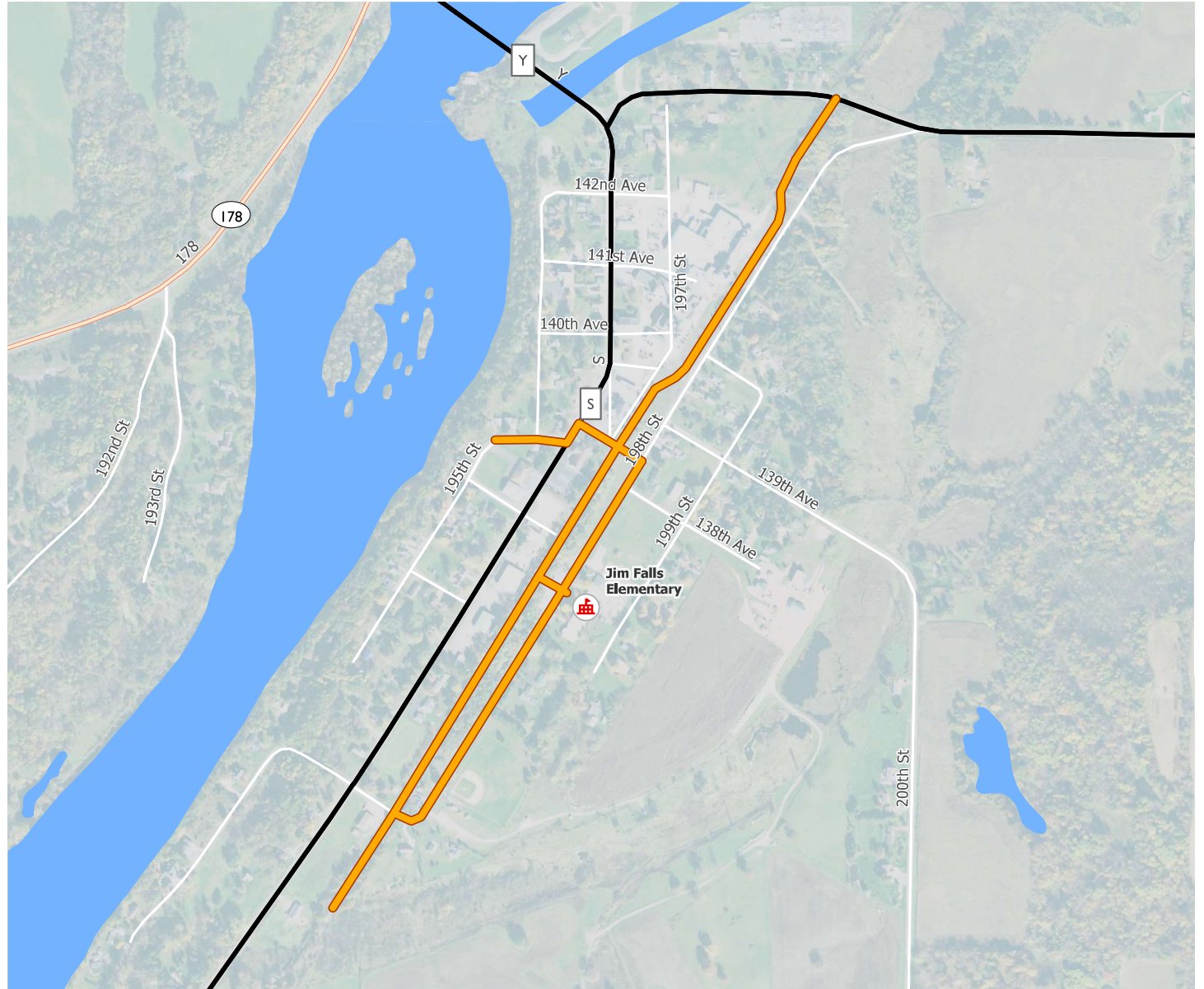
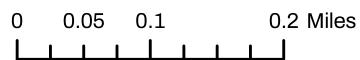
JIM FALLS ELEMENTARY SCHOOL

The map to the right shows the designated safe routes for the school.

-  School
-  Safe Routes

January 2021

Data Sources:
WisDOA, WCWRPC,
WISLR, 2017 Aerial Image



Strengths

1. Student crossing guards are very professional and do a great job helping students cross from the parent drop off parking lot to the school.
2. Many parents walk their children across the street via the crosswalk.
3. Bus drop off on school side of road works well. Students follow the path around to the fenced in playground area.
4. Most traffic drove an appropriate speed past the school.

Issues

1. A few drivers exited the parking area by pulling straight ahead into the road rather than backing up and leaving through the exit.
2. Crossing guards were using cones but the cones were not placed far enough into the road. They should be 6-8 ft from the curb to force traffic away from the edges of the road and draw attention to the crossing.
3. No crossing signs are present at the location of the crossing. Arrows are present but not needed at "Crossing Ahead" signs.
4. There are no sidewalks in the community. There is no access to the school from adjacent state bike trail.
5. The school ahead and school zone signs along southbound 198th are too close together and school zone sign is too low.
6. Bike rack is at the back of the school.

Strategies/Opportunities

1. Look into adding a curb with sidewalk to the drop off area to force traffic to use proper entrance and exit.

2. Ensure crossing guards are properly trained on how to use their equipment, and revisit guidelines as needed.
3. Arrows should be removed from "Crossing Ahead" signs and relocated to new signs added directly at the crossing.
4. Clear additional brush and make an official access from school lot to bike trail.
5. Relocate school zone signs along 198th for maximum effectiveness.
6. Move bike rack to the front of the school to encourage more students to walk or bike to school by making it more prominent.
7. Include the Town of Anson in SRTS planning, give a presentation to the town board so they understand the effort and goals of the plan.



Student crossing guards at Jim Falls help students from the drop-off parking lot to the school grounds.

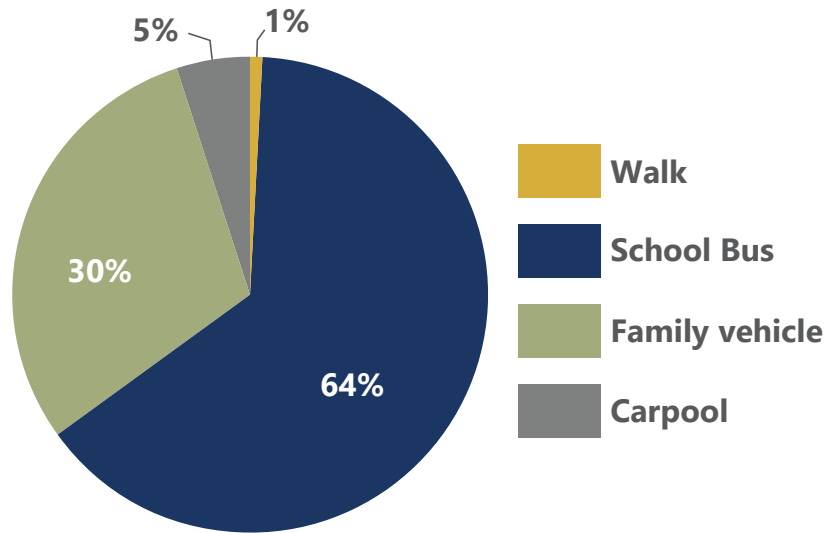
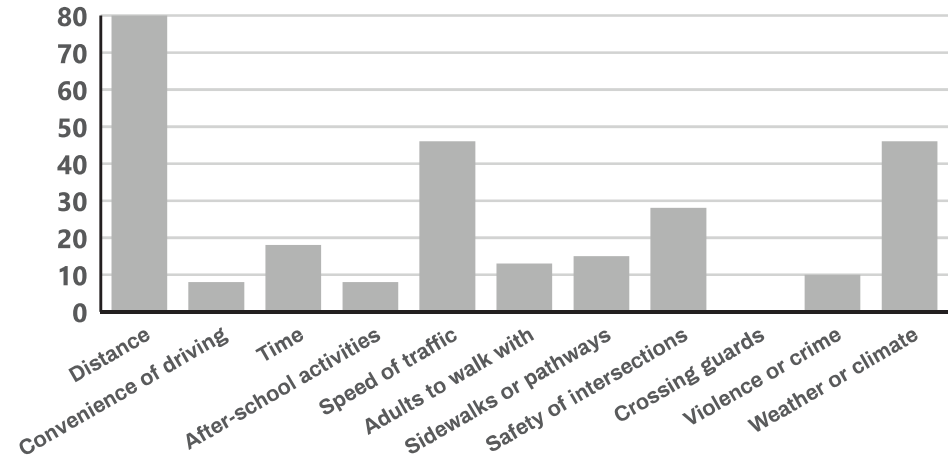
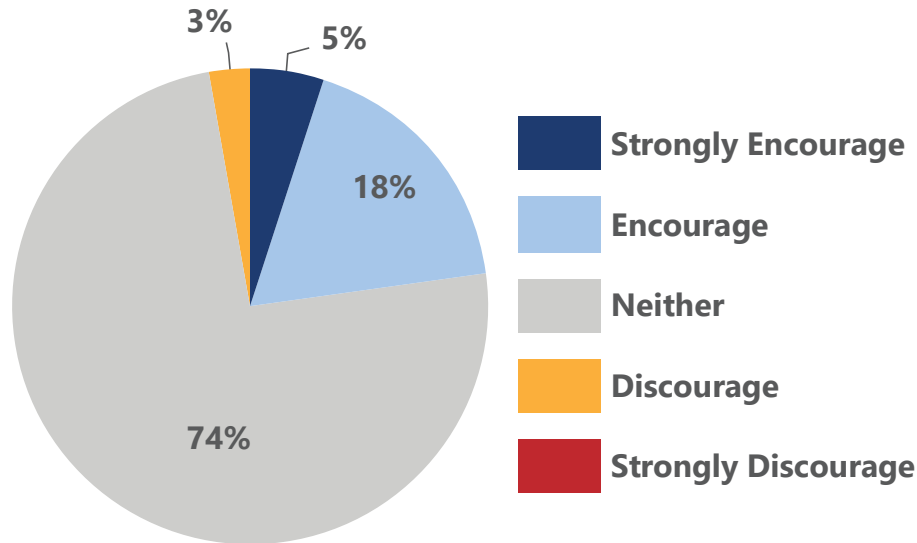


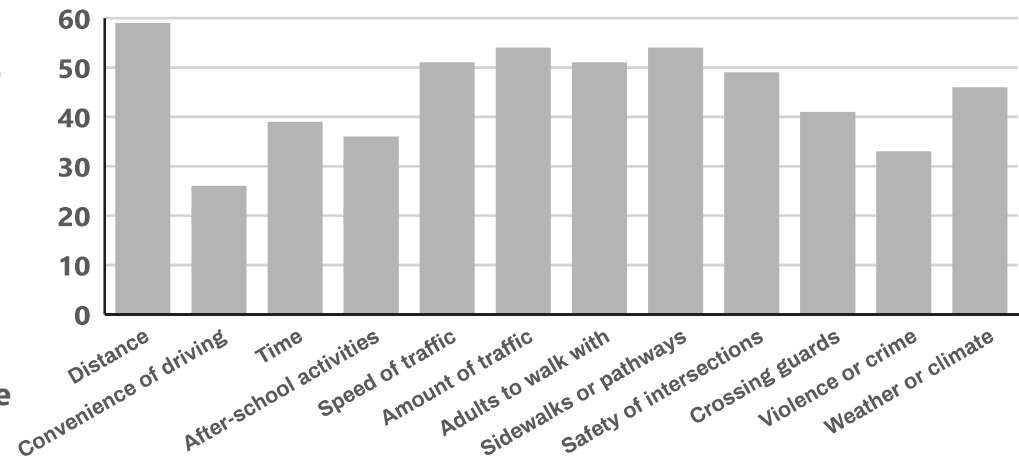
Chart showing student travel mode to/from school in percent (teacher survey tally).



The graph above shows the reasons parents do not allow their children to walk/bike to/from school (parent survey).



Results of parent survey question: "How much does your child's school encourage or discourage walking/biking to/from school?"



The graph above shows which issues, if resolved, would result in parents allowing their children to walk/bike to/from school (parent survey).