



Year School Built
1977

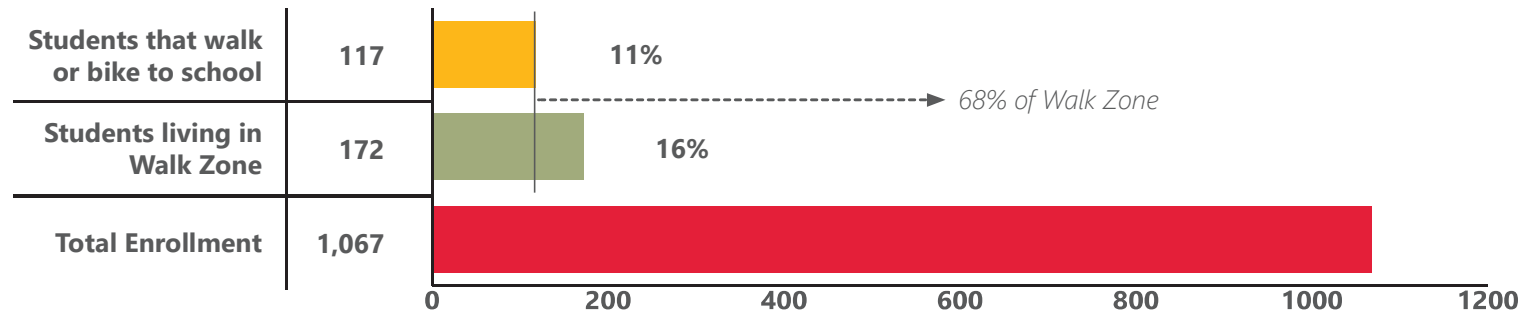
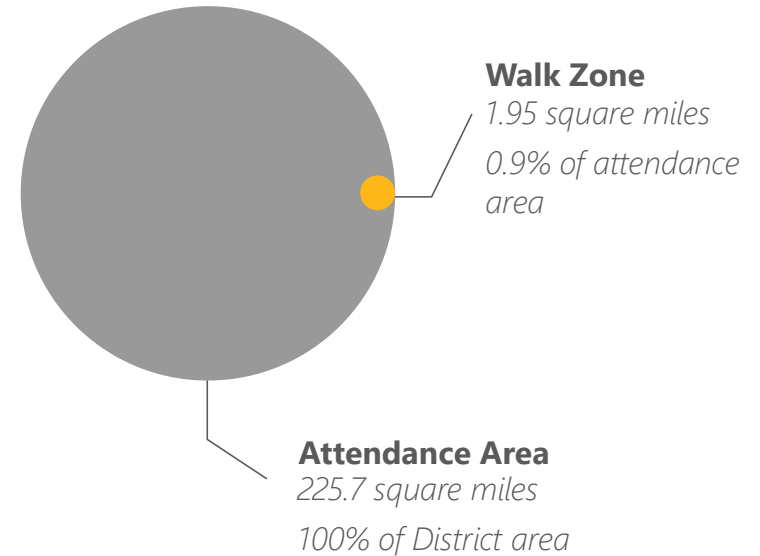
Number of Students
1,067

Economically Disadvantaged
44%

CHIPPEWA FALLS MIDDLE SCHOOL

The graphic to the right shows the proportion of the walk zone in relation to the size of the attendance area for the school. Along with the High School, Chippewa Falls Middle School has the largest school attendance area and the largest walk zone in the district.

The graph below shows the number of students that walk or bike to school, the number of students who live in the walk zone, and total enrollment for the school. Estimates of the number of students that walk or bike to school were taken from classroom tally sheets that were administered to students. Chippewa Falls Middle School has 68 percent of students walking/biking compared to the number of students in their walk zone.






Chippewa Falls Middle School



SRTS 2021

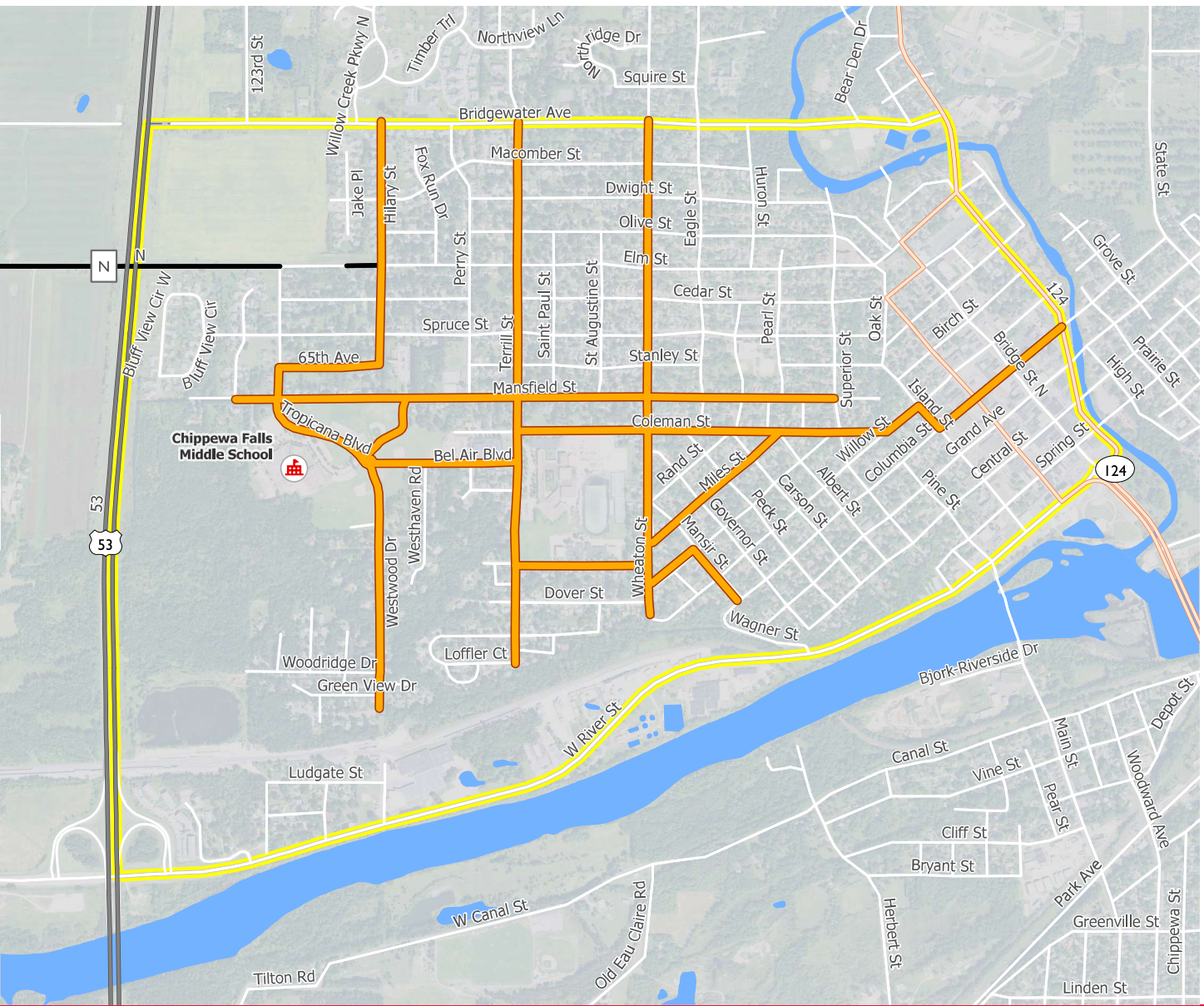
CHIPPEWA FALLS MIDDLE SCHOOL

The map to the right shows the walk zone and designated safe routes for the school.

-  School
-  Walk Zone
-  Safe Routes

January 2021

Data Sources:
WisDOA, WCWRPC,
WISLR, 2017 Aerial Image



Strengths

1. New bus drop off area reduces congestion between buses family vehicles, and pedestrians.
2. Sidewalks are present on both sides of street from Mansfield from Tropicana to Bel Air.
3. Crosswalk newly painted on Tropicana north of Bel Air.
4. Large quantity of bike racks.
5. Tropicana and Bel Air are very wide and would be ideal for a bike lane.

Issues

1. Traffic leaving the north parking lot via Mansfield during drop off and pickup gets backed at Tropicana. Students and vehicles traveling south on Tropicana have difficulty crossing Mansfield. Cars tend not to stop for pedestrians who are waiting to cross.
2. There is no painted crosswalk on Mansfield at Tropicana.
3. Bike racks are only located at north entrance, are on grass, and do not have shelter.
4. Path from Mansfield that crosses field empties into street, not at a crossing.
5. Partially uncontrolled intersection at Bel Air, Tropicana, and Westwood is very wide and creates uncertainty in right-of-way for pedestrians and cars.
6. Cars speed up when heading towards McDonell after turning left onto Bel Air from Tropicana, despite still being in a school zone.
7. Additional school zone signs are needed on Mansfield and Bel Air.
8. Not all designated routes have sidewalks or bike lanes.

Strategies & Opportunities

1. Research options to improve traffic flow at Mansfield and Tropicana.
2. Paint high-visibility crosswalks on Mansfield at Tropicana and add crossing signs with signage, including arrow signs.
3. Add arrows to crosswalk sign on Tropicana by bus entrance.
4. Add bike parking to south side of school where some students depart and arrive.
5. Eliminate both boulevard ramps that empty into Tropicana from the ballfield parcel near the path to encourage students to follow sidewalk to crosswalk locations.
6. Look into feasibility of adding yield stop signs, or a traffic circle at the intersection of Tropicana, Bel Air, and Westwood.
7. Add additional school zone signs on west-bound Mansfield and east-bound Bel Air.
8. Add a bike lane and/or sharrows along Tropicana from Mansfield to Bel Air, continuing along Bel Air to Terrill.
9. Add sidewalks along Westwood and Mansfield where missing.



Students walk in the road on Westwood Dr. towards the school. Sidewalks and/or a bike lane would improve safety for pedestrians on this stretch of road, which is a designated route to school.

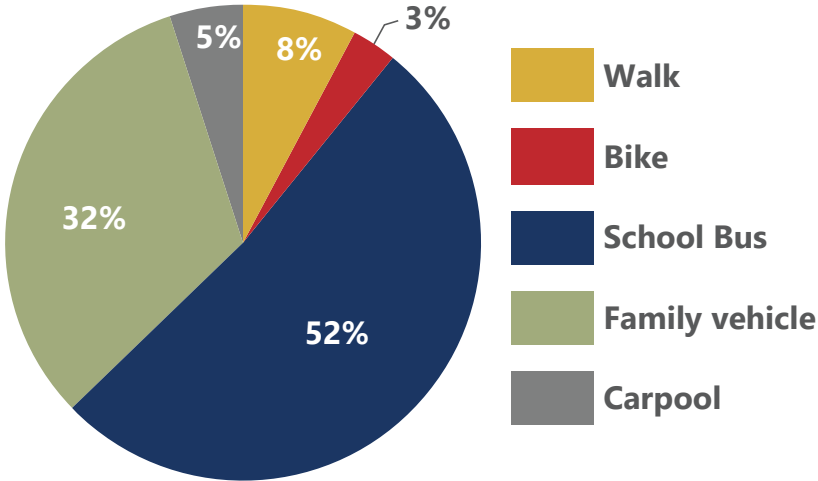
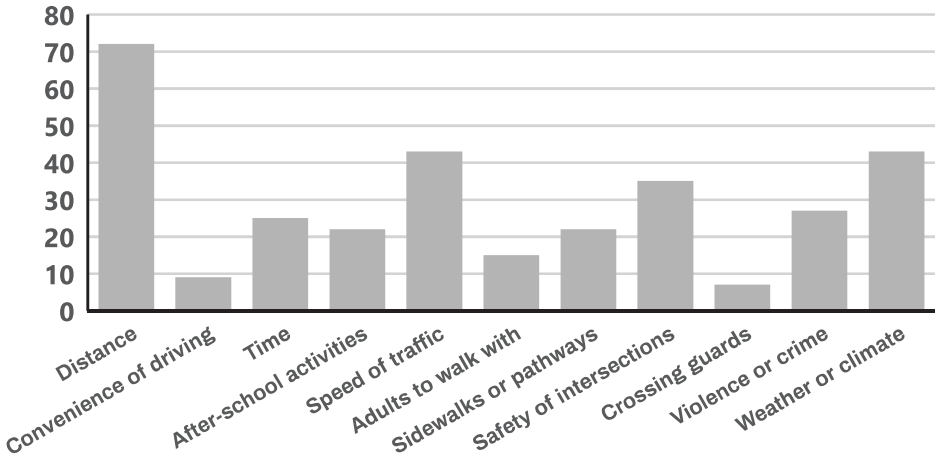
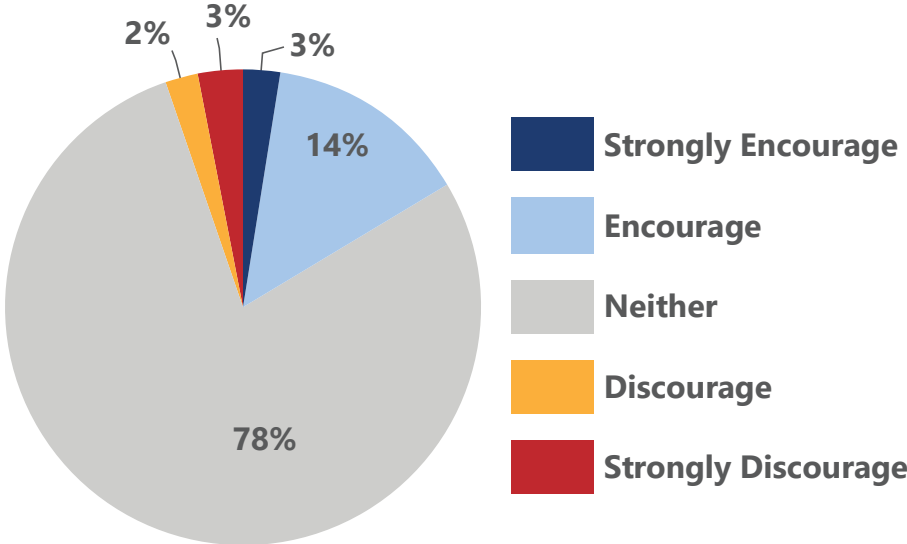


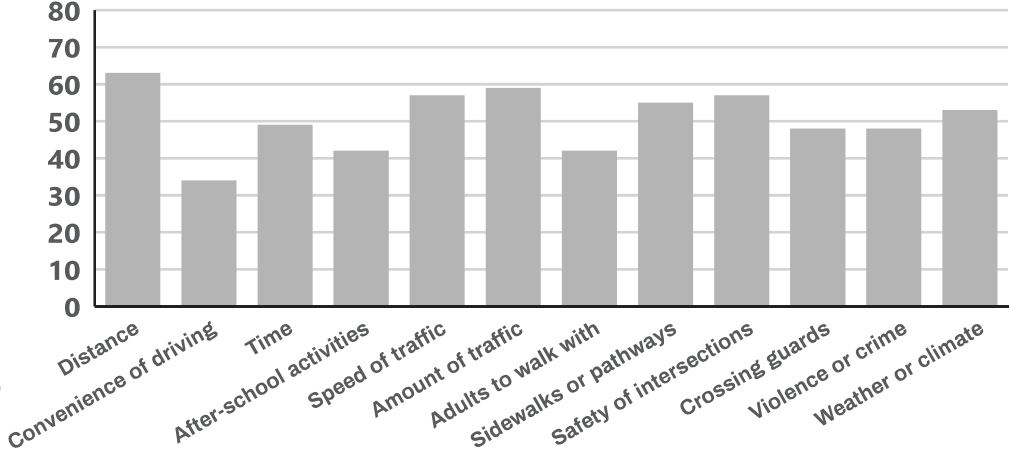
Chart showing student travel mode to/from school in percent (teacher survey tally).



The graph above shows the reasons parents do not allow their children to walk/bike to/from school (parent survey).



Results of parent survey question: "How much does your child's school encourage or discourage walking/biking to/from school?"



The graph above shows which issues, if resolved, would result in parents allowing their children to walk/bike to/from school (parent survey).