



Year School Built
1995

Number of Sections
4

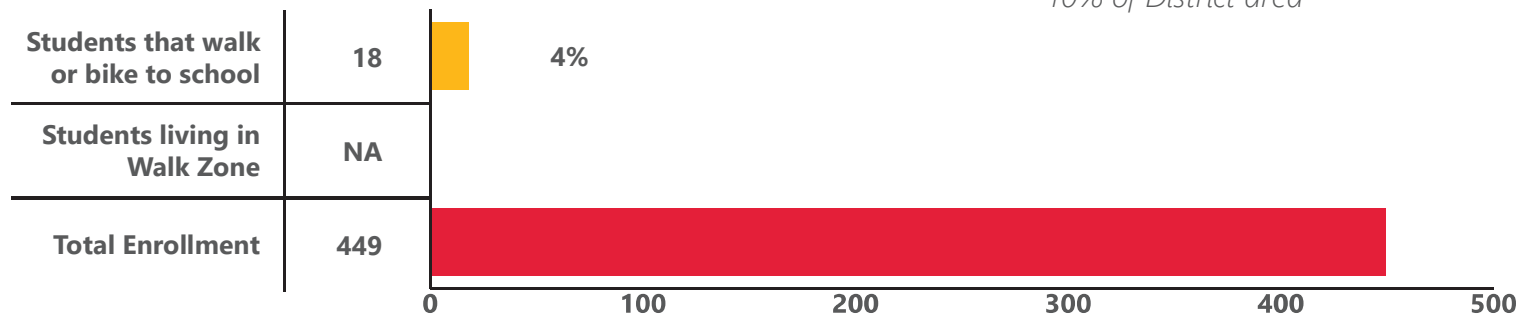
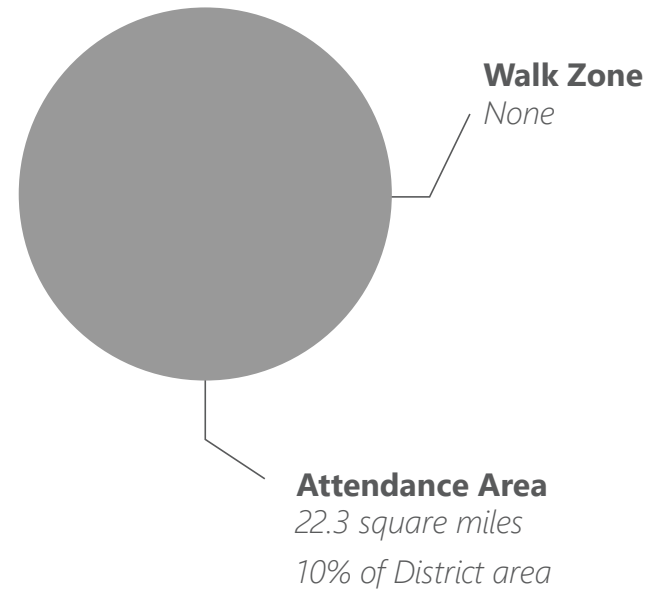
Number of Students
449

Economically Disadvantaged
63%

PARKVIEW ELEMENTARY SCHOOL

The graphic to the right shows the proportion of the walk zone in relation to the size of the attendance area for the school. Parkview has the third smallest elementary school attendance area and no designated walk zone.



The graph below shows the number of students that walk or bike to school, the number of students who live in the walk zone, and total enrollment for the school. Estimates of the number of students that walk or bike to school were taken from classroom tally sheets that were administered to students. Parkview is a good example of how important safe walking and biking corridors around schools are, as the school does not have a walk zone, but students still walk and/or bike to school daily.





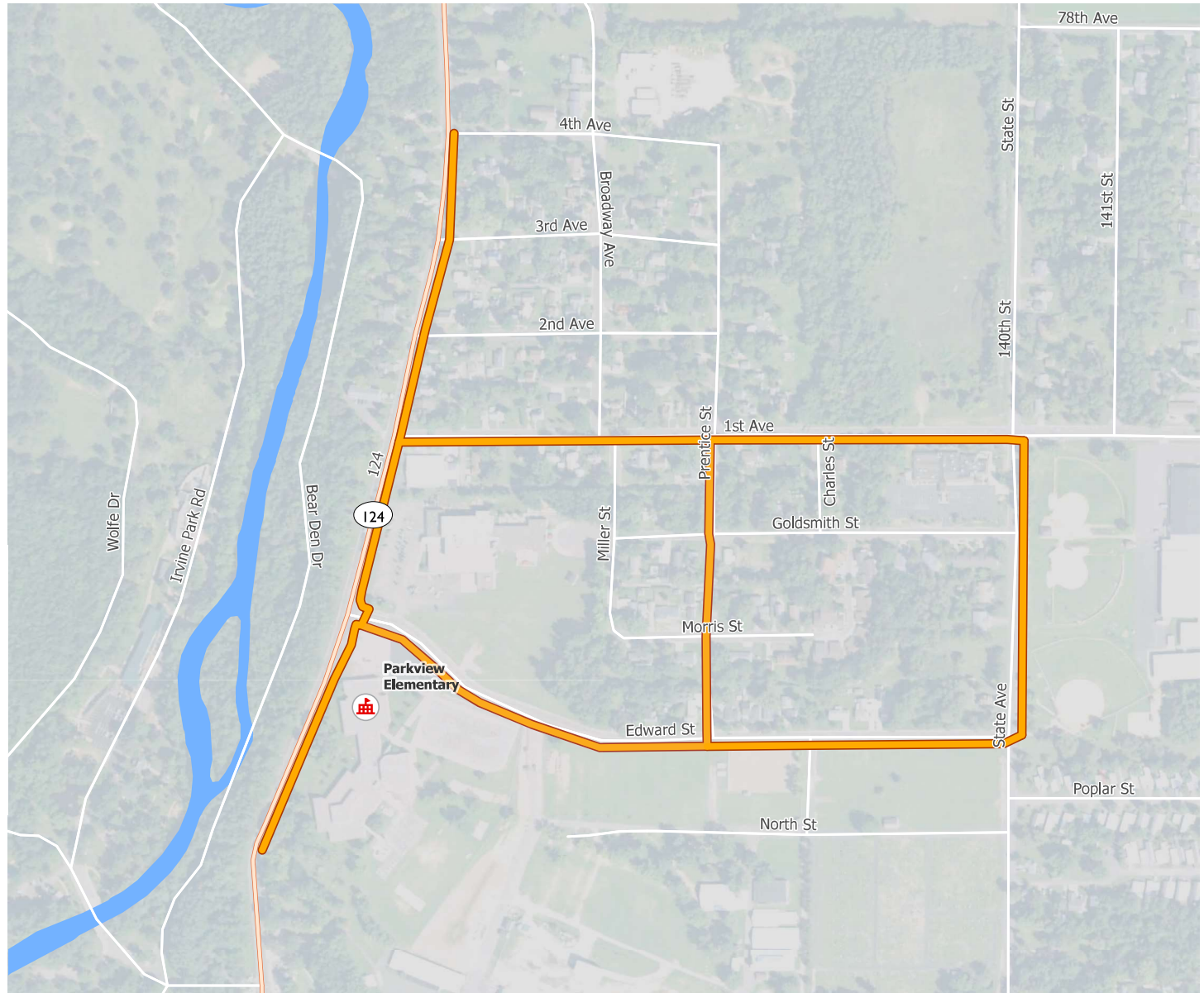
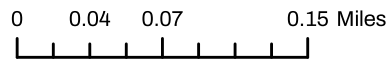
PARKVIEW ELEMENTARY SCHOOL

The map to the right shows the designated safe routes for the school.

-  School
-  Safe Routes

January 2021

Data Sources:
WisDOA, WCWRPC,
WISLR, 2017 Aerial Image



Strengths

1. Student crossing guards do a good job both at Edward and in parking lot for parent-drop off area. Several adult supervisors to help with drop-off and pickup.
2. Bus drop-off is separate from parent drop off and reduces congestion between the two.
3. Staggered release schedule based on transportation method helps ease congestion in the parking lot and around the school.

Issues

1. The number one concern continues to be the high-use unmarked crossing on Edward from the school lot to the YMCA property.
2. No cars slowed to 15 MPH on Jefferson, despite student pedestrian presence on the sidewalk near the school zone sign.
3. There are no sidewalks on the north side of Edward.
4. Crosswalk at Edward and State is not on a controlled street (no stop sign) and should be zebra-striped and signed for greater visibility.
5. Crossing on Edward where the asphalt bike lane starts is mid-block and is not zebra-striped or signed. The north side of the crosswalk deposits into the curb, and there is no sidewalk on that side of the road.
6. There are no school zone signs on eastbound Edward between Jefferson and the school.
7. Crossing guards used cones but did not place them far enough into the street.
8. Bike racks are located on grass and not highly visible from inside school.

Strategies/Opportunities

1. Work with City of Chippewa Falls on options to improve the safety of the unmarked crossing on Edward from the school to the YMCA property. At minimum, this should include painting a zebra-stripe crosswalk, adding crossing signs, and curb cuts.
2. Add a flashing solar speed sign near the school zone sign on Jefferson to draw attention to school zone speed limit violations.
3. Construct a sidewalk along the north side of Edward.
4. The crosswalk on State at Edward should have signage and zebra-stripe paint since it is located on an uncontrolled street.
5. The crosswalk on Edward where the asphalt bike path starts should have signage and zebra-stripe paint since it is located mid-block.
6. Review school zone signage and add/locate/move signs as needed.
7. Ensure crossing guards are properly trained on equipment use and follow best practices for crossing procedures.
8. Crossing ahead and crossing signs for the crossing on Edward at Jefferson is not needed because this is a signed (stop sign) intersection. Reduce sign "pollution" by removing these signs, but add new signs where needed along Edward as mentioned above.
9. Add a bike lane and sharrows along the north side of Edward, from to Jefferson to the crossing where the asphalt lane starts on south side of road.
10. Relocate bike racks to concrete area prominently in front of school to encourage more bike riding.

Parkview Elementary School

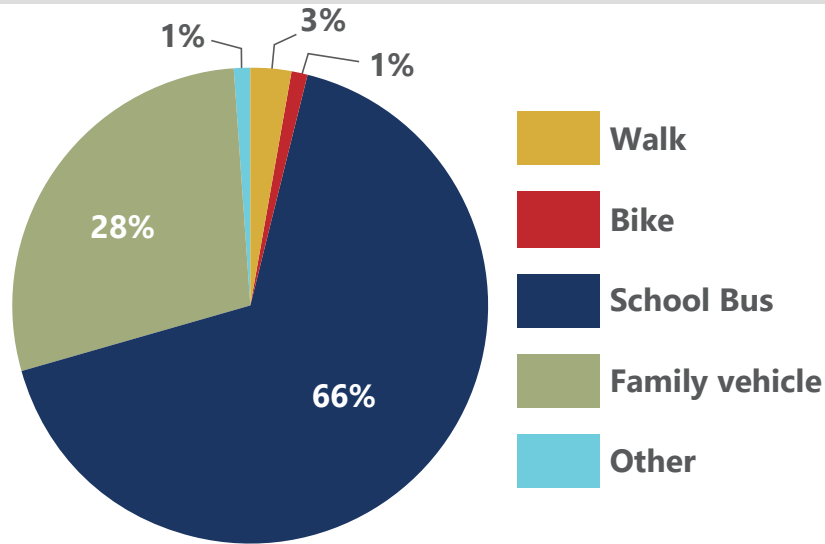
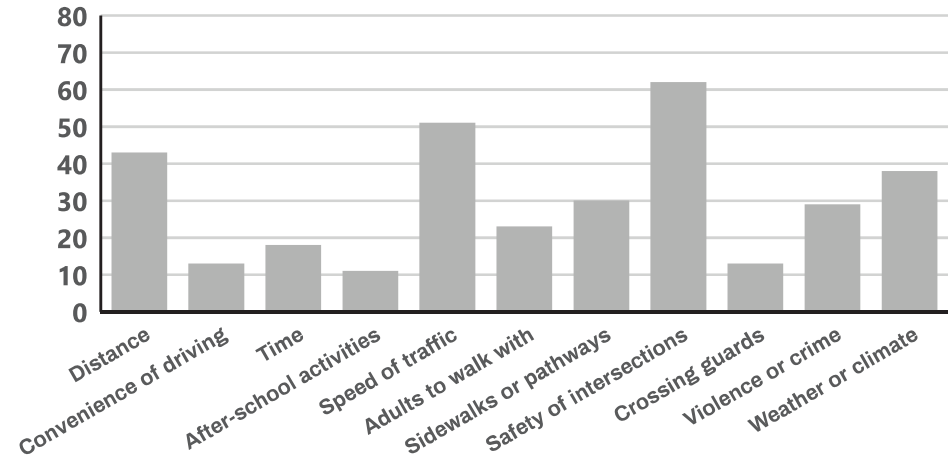
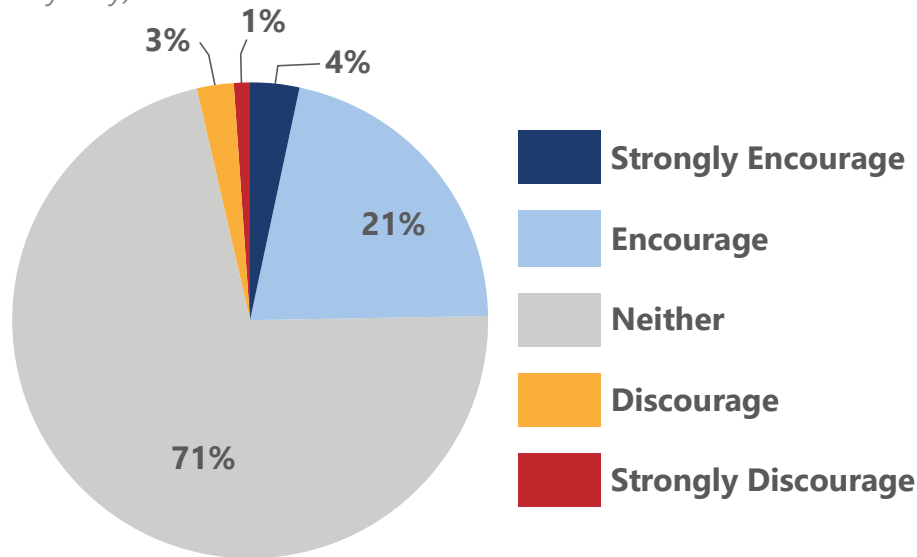


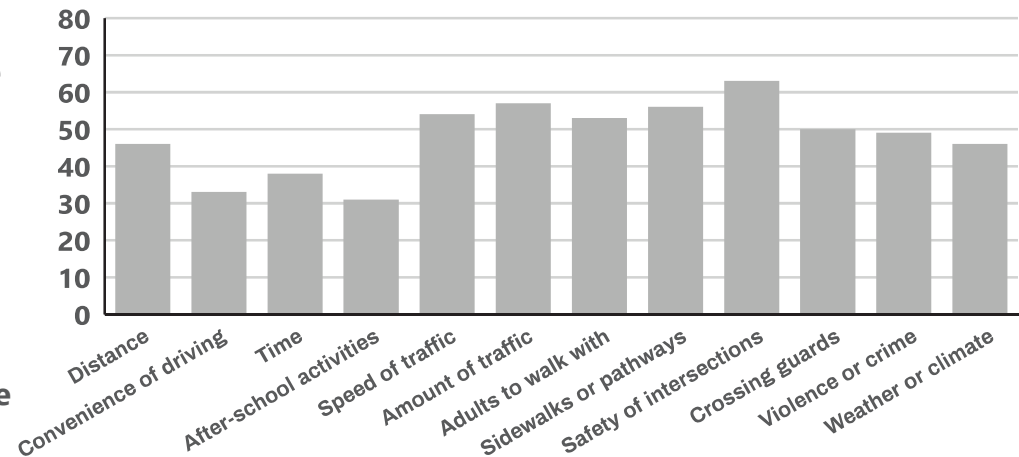
Chart showing student travel mode to/from school in percent (teacher survey tally).



The graph above shows the reasons parents do not allow their children to walk/bike to/from school (parent survey).



Results of parent survey question: "How much does your child's school encourage or discourage walking/biking to/from school?"



The graph above shows which issues, if resolved, would result in parents allowing their children to walk/bike to/from school (parent survey).