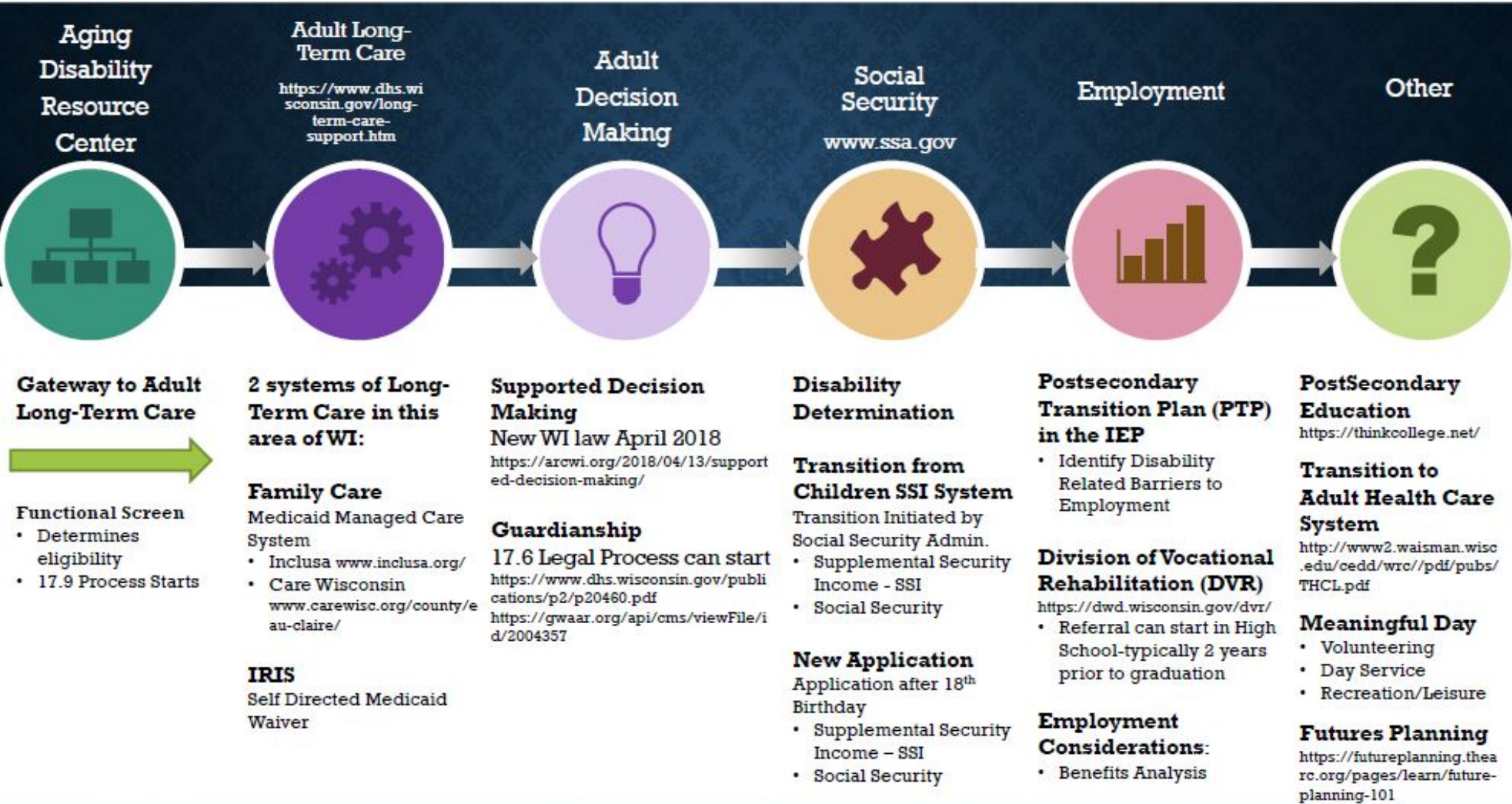




Transition to Adult Services

Planning for students with Significant disabilities beyond 18



Amanda Turner
Transition Coordinator
715-726-2406 x-2202 turnerag@chipfalls.org
<https://tinyurl.com/CFSDTransition>



Lauri Malnory
Family Services Special Education
715-726-2785 x-3030 malnorlr@chipfalls.org
<https://tinyurl.com/CFSDFamilyResourceGuide>